



1 Bed Apartment

17 Springfield Mill
Sandiacre
Nottingham
NG10 5QD

£795 Per Calendar Month

Fletcher
& Company

17 Springfield Mill Nottingham NG10 5QD



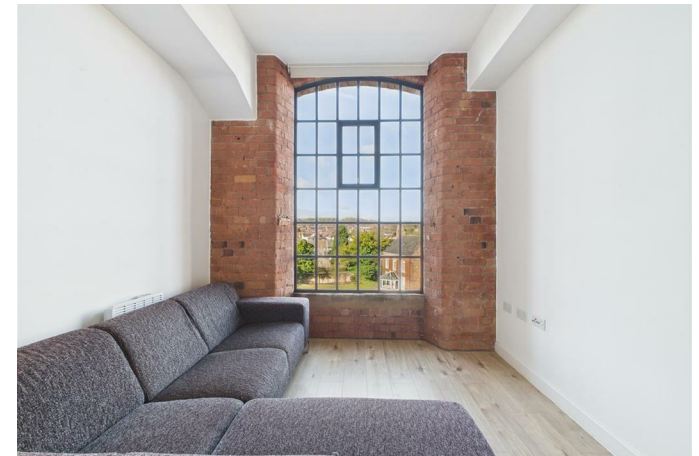
- Available Immediately
- A Stunning Second Floor One Bedroom Apartment
- Stylish Throughout
- Beautiful Views
- Gated Parking With Secure Door Access
- Allocated Parking For One Vehicle
- Available With Settee (if Required)
- Kitchen With Fridge & Dishwasher
- Stunning Bathroom
- Available Long Term

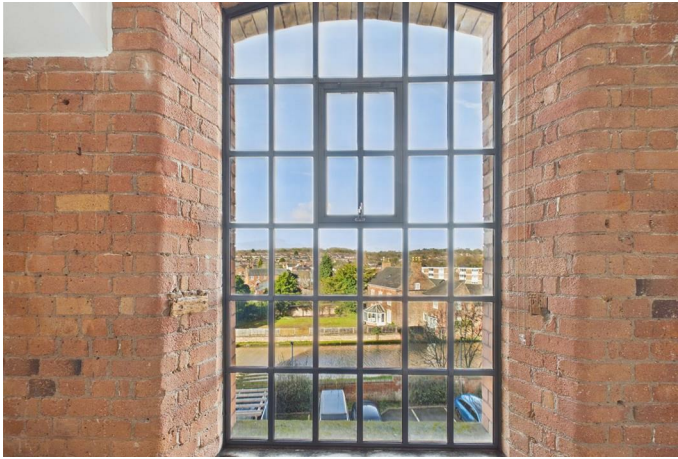
Available Immediately - A stunning One Bedroom, modern, unfurnished apartment (available with settee if required)

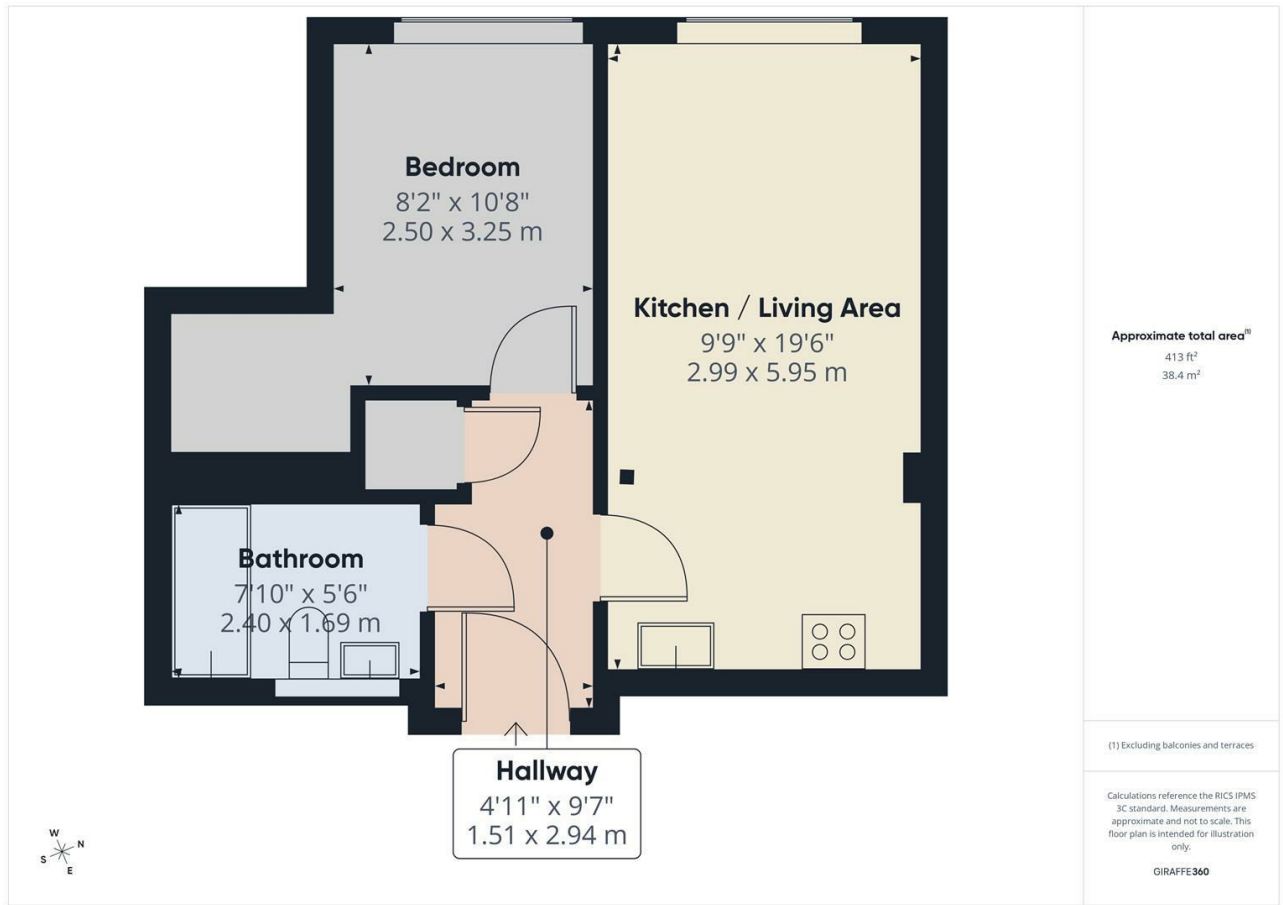
Located on the second floor, as you enter the apartment you'll be greeted by a bright modern fitted kitchen with an integrated electric oven/hob and a stylishly finished countertop. The apartment comprises of a living/dining area, the kitchen is complete with integral fridge and dishwasher, a double bedroom and a large very stylish bathroom.

This apartment is finished to a high standard and is conveniently situated close junction 25 of the M1 and A52, providing excellent access to both Nottingham and Derby and the rest of the country.

The apartment further benefits from stunning canal views, its own allocated car parking space within this very secure and well kept development.





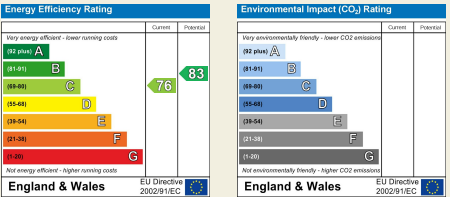


Duffield House
Town Street
Duffield
Derbyshire
DE56 4GD

T: 01332 843390

E: duffield@fletcherandcompany.co.uk

www.fletcherandcompany.co.uk



These particulars do not constitute an offer or a contract neither do they form part of an offer or contract. The vendor does not make or give and Messrs. Fletcher & Company nor any person employed has any authority to make or give any representation or warranty, written or oral, in relation to this property. Whilst we endeavour to make our sales details accurate and reliable, if there is any point which is of particular importance to you, please contact the office and we will be pleased to check the information for you, particularly if contemplating travelling some distance to view the property. None of the services or appliances to the property have been tested and any prospective purchasers should satisfy themselves as to their adequacy prior to committing themselves to purchase.

Fletcher
& Company